

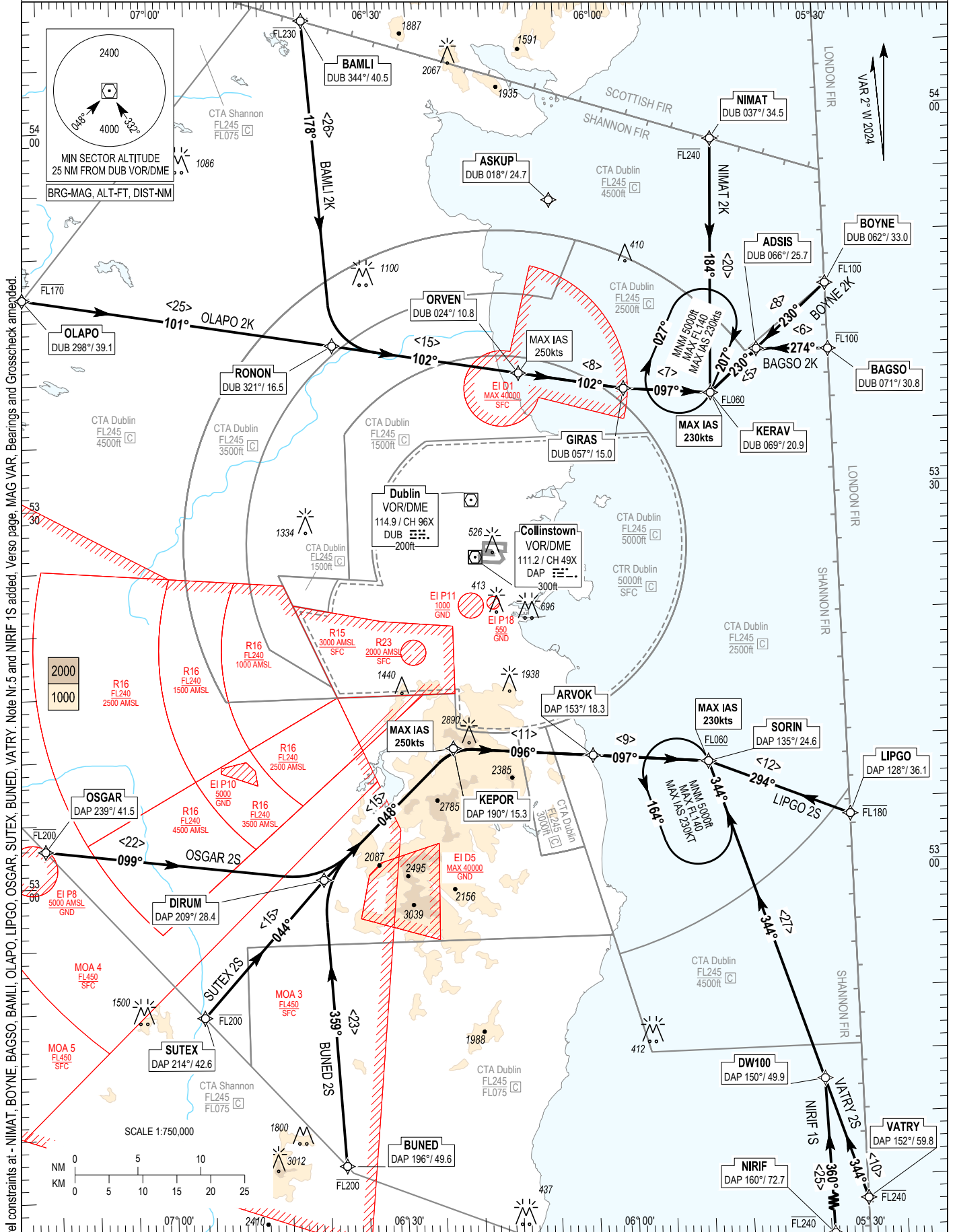
RNAV STANDARD ARRIVAL CHART INSTRUMENT (STAR) - ICAO

TRANS ALT 5000ft TRANS LEVEL by ATC

ATIS APP	124.530	ACC Upper North	129.180
	121.100	ACC Upper South	135.655
		ACC Lower North	132.580
		ACC Lower South	120.755

DUBLIN RWY 34

NIMAT 2K, BOYNE 2K, BAGSO 2K, LIPGO 2S, VATRY 2S, BUNED 2S, SUTEX 2S, OSGAR 2S, OLAPO 2K, BAMLI 2K, NIRIF 1S.



CHANGE: Level constraints at - NIMAT, BOYNE, BAGSO, BAMLI, OLAPO, LIPGO, OSGAR, SUTEX, BUNED, VATRY. Note Nr.5 and NIRIF 1S added. Verso page, MAG VAR, Bearings and Crosscheck amended.

NOTES: 1. ASKUP may be used tactically by ATC to ensure aircraft routings are clear of EI D1. 2. MAX IAS 250kts below FL100. 3. DME/DME or GNSS navigation required. 4. Aircraft routing via ASKUP that experience radio communication failure should follow the appropriate procedure for the runway 34 remaining clear of EI D1. 5. For Comms Failure Procedures see AIP EIDW AD 2.22 paragraph 5.3.1 **VERTICAL PLANNING INFORMATION:** 1. ACTUAL DESCENT CLEARANCE WILL BE AS DIRECTED BY ATC. **CAUTION:** 2. Pilots must inform ATC if unable to comply with any level or speed constraint. **WARNING:** 1. Do not proceed beyond KERAV/SORIN without ATC clearance, enter hold.

16 MAY 2024

BAGSO 2K STAR RWY 34

BAGS2K

Nav. Spec.	WPT Name	Latitude (N) / Longitude (W)	Path Term	Fly-By Fly-Over	True track / Mag track (°)	Distance (NM)	Upper limit / Lower limit (ft)	Speed limit (kts)	Remarks
RNAV 1	BAGSO	534048.0 / 0053000.0	IF	-	-	-	-FL100 / -	-	-
RNAV 1	ADSI	534103.1 / 0053934.0	TF	Fly-By	272.6 / 274	5.7	-	-	-
RNAV 1	KERAV	533742.7 / 0054557.3	TF	Fly-By	228.7 / 230	5.1	- / +FL060	230	Turn L

BAMLI 2K STAR RWY 34

BAML2K

Nav. Spec.	WPT Name	Latitude (N) / Longitude (W)	Path Term	Fly-By Fly-Over	True track / Mag track (°)	Distance (NM)	Upper limit / Lower limit (ft)	Speed limit (kts)	Remarks
RNAV 1	BAMLI	540828.5 / 0063904.0	IF	-	-	-	-FL230 / -	-	-
RNAV 1	RONON	534233.9 / 0063619.2	TF	Fly-By	176.4 / 178	26.0	-	-	-
RNAV 1	ORVEN	533953.5 / 0061129.8	TF	Fly-By	100.1 / 102	15.0	-	250	Turn L
RNAV 1	GIRAS	533821.0 / 0055733.2	TF	Fly-By	100.4 / 102	8.4	-	250	-
RNAV 1	KERAV	533742.7 / 0054557.3	TF	-	095.2 / 097	6.9	- / +FL060	230	Turn L

BOYNE 2K STAR RWY 34

BOYN2K

Nav. Spec.	WPT Name	Latitude (N) / Longitude (W)	Path Term	Fly-By Fly-Over	True track / Mag track (°)	Distance (NM)	Upper limit / Lower limit (ft)	Speed limit (kts)	Remarks
RNAV 1	BOYNE	534601.6 / 0053000.0	IF	-	-	-	-FL100 / -	-	-
RNAV 1	ADSI	534103.1 / 0053934.0	TF	Fly-By	228.8 / 230	7.6	-	-	-
RNAV 1	KERAV	533742.7 / 0054557.3	TF	Fly-By	228.7 / 230	5.1	- / +FL060	230	-

BUNED 2S STAR RWY 34

BUNE2S

Nav. Spec.	WPT Name	Latitude (N) / Longitude (W)	Path Term	Fly-By Fly-Over	True track / Mag track (°)	Distance (NM)	Upper limit / Lower limit (ft)	Speed limit (kts)	Remarks
RNAV 1	BUNED	523721.9 / 0063748.2	IF	-	-	-	-FL200 / -	-	-
RNAV 1	DIRUM	530009.7 / 0063940.0	TF	Fly-By	357.2 / 359	22.9	-	-	-
RNAV 1	KEPOR	531016.5 / 0062200.7	TF	Fly-By	046.3 / 048	14.7	-	250	Turn R
RNAV 1	ARVOK	530919.0 / 0060335.1	TF	Fly-By	094.8 / 096	11.1	-	250	Turn R
RNAV 1	SORIN	530829.3 / 0054822.5	TF	Fly-By	095.1 / 097	9.2	- / +FL060	230	-

LIPGO 2S STAR RWY 34

LIPG2S

Nav. Spec.	WPT Name	Latitude (N) / Longitude (W)	Path Term	Fly-By Fly-Over	True track / Mag track (°)	Distance (NM)	Upper limit / Lower limit (ft)	Speed limit (kts)	Remarks
RNAV 1	LIPGO	530350.1 / 0053000.0	IF	-	-	-	-FL180 / -	-	-
RNAV 1	SORIN	530829.3 / 0054822.5	TF	-	292.9 / 294	12.0	- / +FL060	230	-

NIMAT 2K STAR RWY 34

NIMA2K

Nav. Spec.	WPT Name	Latitude (N) / Longitude (W)	Path Term	Fly-By Fly-Over	True track / Mag track (°)	Distance (NM)	Upper limit / Lower limit (ft)	Speed limit (kts)	Remarks
RNAV 1	NIMAT	535754.1 / 0054431.7	IF	-	-	-	-FL240 / -	-	-
RNAV 1	KERAV	533742.7 / 0054557.3	TF	Fly-By	182.4 / 184	20.2	- / +FL060	230	-

NIRIF 1S STAR RWY 34

NIRI1S

Nav. Spec.	WPT Name	Latitude (N) / Longitude (W)	Path Term	Fly-By Fly-Over	True track / Mag track (°)	Distance (NM)	Upper limit / Lower limit (ft)	Speed limit (kts)	Remarks
RNAV 1	NIRIF	521755.9 / 0053404.3	IF	-	-	-	-FL240 / -	-	-
RNAV 1	DW100	524253.8 / 0053456.8	TF	-	358.8 / 000	25.0	-	-	-
RNAV 1	SORIN	530829.3 / 0054822.5	TF	Fly-By	342.5 / 344	26.9	- / +FL060	230	Turn L

OLAPO 2K STAR RWY 34

OLAP2K

Nav. Spec.	WPT Name	Latitude (N) / Longitude (W)	Path Term	Fly-By Fly-Over	True track / Mag track (°)	Distance (NM)	Upper limit / Lower limit (ft)	Speed limit (kts)	Remarks
RNAV 1	OLAPO	534649.0 / 0071740.6	IF	-	-	-	-FL170 / -	-	-
RNAV 1	RONON	534233.9 / 0063619.2	TF	Fly-By	099.6 / 101	24.9	-	-	-
RNAV 1	ORVEN	533953.5 / 0061129.8	TF	Fly-By	100.1 / 102	15.0	-	250	-
RNAV 1	GIRAS	533821.0 / 0055733.2	TF	Fly-By	100.4 / 102	8.4	-	250	-
RNAV 1	KERAV	533742.7 / 0054557.3	TF	Fly-By	095.2 / 097	6.9	- / +FL060	230	Turn L

OSGAR 2S STAR RWY 34

OSGA2S

Nav. Spec.	WPT Name	Latitude (N) / Longitude (W)	Path Term	Fly-By Fly-Over	True track / Mag track (°)	Distance (NM)	Upper limit / Lower limit (ft)	Speed limit (kts)	Remarks
RNAV 1	OSGAR	530257.9 / 0071612.8	IF	-	-	-	-FL200 / -	-	-
RNAV 1	DIRUM	530009.7 / 0063940.0	TF	Fly-By	097.0 / 099	22.2	-	-	-
RNAV 1	KEPOR	531016.5 / 0062200.7	TF	Fly-By	046.3 / 048	14.7	-	250	Turn L
RNAV 1	ARVOK	530919.0 / 0060335.1	TF	Fly-By	094.8 / 096	11.1	-	250	Turn R
RNAV 1	SORIN	530829.3 / 0054822.5	TF	Fly-By	095.1 / 097	9.2	- / +FL060	230	-

SUTEX 2S STAR RWY 34

SUTE2S

Nav. Spec.	WPT Name	Latitude (N) / Longitude (W)	Path Term	Fly-By Fly-Over	True track / Mag track (°)	Distance (NM)	Upper limit / Lower limit (ft)	Speed limit (kts)	Remarks
RNAV 1	SUTEX	524927.7 / 0065549.3	IF	-	-	-	-FL200 / -	-	-
RNAV 1	DIRUM	530009.7 / 0063940.0	TF	Fly-By	042.3 / 044	14.5	-	-	-
RNAV 1	KEPOR	531016.5 / 0062200.7	TF	Fly-By	046.3 / 048	14.7	-	250	-
RNAV 1	ARVOK	530919.0 / 0060335.1	TF	Fly-By	094.8 / 096	11.1	-	250	Turn R
RNAV 1	SORIN	530829.3 / 0054822.5	TF	Fly-By	095.1 / 097	9.2	- / +FL060	230	-

VATRY 2S STAR RWY 34
VATR2S

Nav. Spec.	WPT Name	Latitude (N) / Longitude (W)	Path Term	Fly-By Fly-Over	True track / Mag track (°)	Distance (NM)	Upper limit / Lower limit (ft)	Speed limit (kts)	Remarks
RNAV 1	VATRY	523316.0 / 0053000.0	IF	-	-	-	-FL240 / -	-	-
RNAV 1	DW100	524253.8 / 0053456.8	TF	Fly-By	342.7 / 344	10.1	-	-	-
RNAV 1	SORIN	530829.3 / 0054822.5	TF	Fly-By	342.5 / 344	26.9	- / +FL060	230	-

Hold Identification – EIDW AD 2.24-25.1

Holding Fix	Latitude (N) / Longitude (W)	Inbound True Track (°)	Inbound Mag Track (°)	Maximum Indicated Airspeed (kts)	Minimum Holding Altitude (ft)	Maximum Holding Level (FL)	Outbound time (min)	Direction of Turn
KERAV	533742.7 / 0054557.3	205.6	207	230	+A5000	-FL140	1	R
SORIN	530829.3 / 0054822.5	342.4	344	230	+A5000	-FL140	1	L