

RNAV STANDARD ARRIVAL CHART
INSTRUMENT (STAR) - ICAO

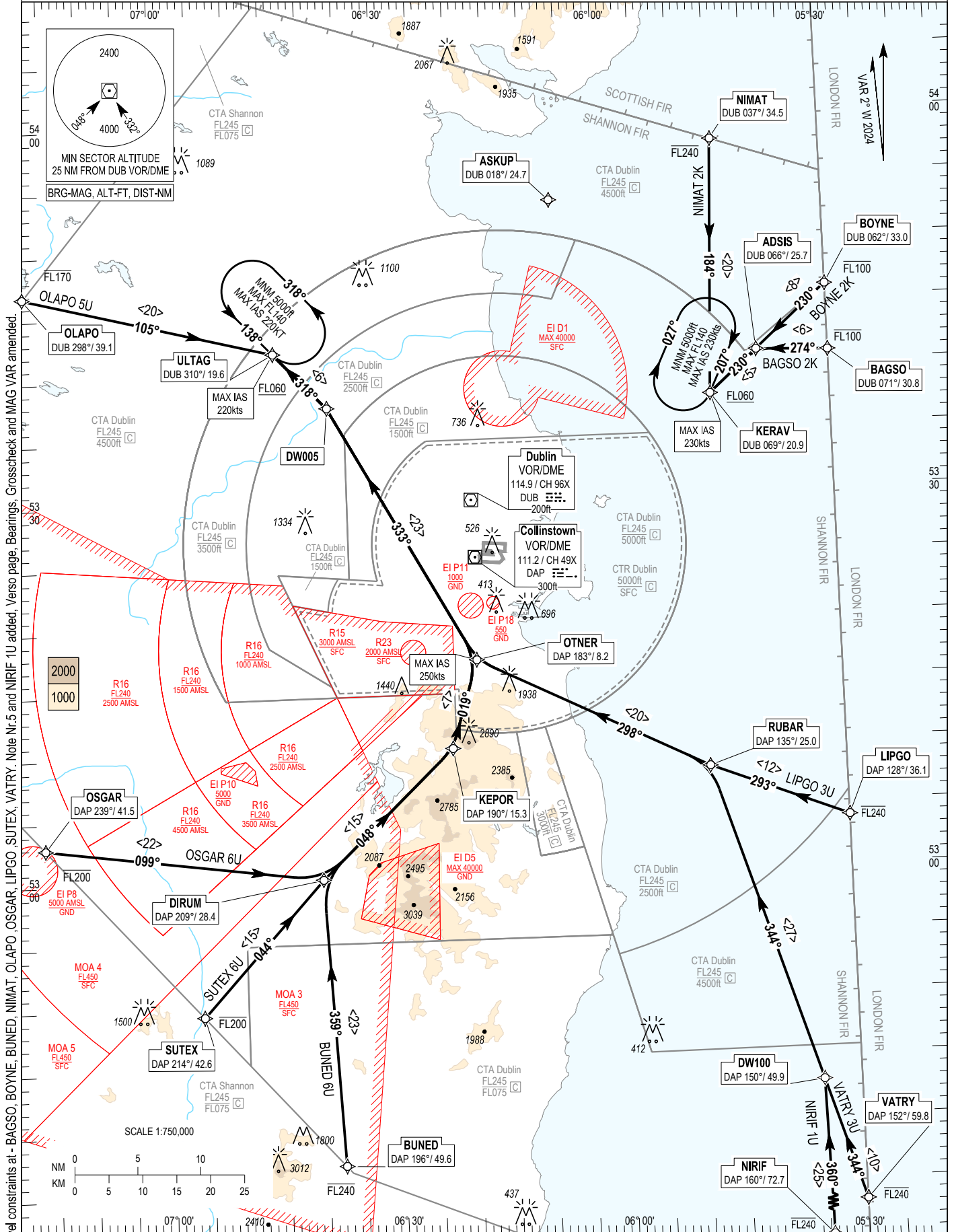
TRANS ALT 5000ft
TRANS LEVEL by ATC

ATIS 124.530
APP 121.100

ACC Upper North 129.180
ACC Upper South 135.655
ACC Lower North 132.580
ACC Lower South 120.755

DUBLIN RWY 16

NIMAT 2K, BOYNE 2K, BAGSO 2K, LIPGO 6U, VATRY 3U,
BUNED 6U, SUTEX 6U, OSGAR 6U, OLAPO 5U, NIRIF 1U.



CHANGE: Level constraints at - BAGSO, BOYNE, BUNED, NIMAT, OLAPO, OSGAR, LIPGO, SUTEX, VATRY. Note Nr.5 and NIRIF 1U added. Verso page, Bearings, Grosscheck and MAG VAR amended.

NOTES: 1. ASKUP may be used tactically by ATC to ensure aircraft routings are clear of EI D1. 2. MAX IAS 250kts below FL100. 3. DME/DME or GNSS navigation required. 4. Aircraft routing via ASKUP that experience radio communication failure should follow the appropriate procedure for the runway 16 remaining clear of EI D1. 5. For Comms Failure Procedures see AIP EIDW AD 2.22 paragraph 5.3.1

VERTICAL PLANNING INFORMATION: 1. Pilots should plan for descent fro RWY 16; BAGSO at FL100 and KERAV at 6000ft; ULTAG at 6000ft; ACTUAL DESCENT CLEARANCE WILL BE AS DIRECTED BY ATC. **WARNING:** 2. Do not proceed beyond KERAV/ULTAG without ATC clearance, enter hold.

16 MAY 2024

BAGSO 2K STAR RWY 16

BAGS2K

Nav. Spec.	WPT Name	Latitude (N) / Longitude (W)	Path Term	Fly-By Fly-Over	True track / Mag track (°)	Distance (NM)	Upper limit / Lower limit (ft)	Speed limit (kts)	Remarks
RNAV 1	BAGSO	534048.0 / 0053000.0	IF	-	-	-	-FL100 / -	-	-
RNAV 1	ADSI	534103.1 / 0053934.0	TF	Fly-By	272.6 / 274	5.7	-	-	-
RNAV 1	KERAV	533742.7 / 0054557.3	TF	Fly-By	228.7 / 230	5.1	- / +FL060	230	Turn L

BOYNE 2K STAR RWY 16

BOYN2K

Nav. Spec.	WPT Name	Latitude (N) / Longitude (W)	Path Term	Fly-By Fly-Over	True track / Mag track (°)	Distance (NM)	Upper limit / Lower limit (ft)	Speed limit (kts)	Remarks
RNAV 1	BOYNE	534601.6 / 0053000.0	IF	-	-	-	-FL100 / -	-	-
RNAV 1	ADSI	534103.1 / 0053934.0	TF	Fly-By	228.8 / 230	7.6	-	-	-
RNAV 1	KERAV	533742.7 / 0054557.3	TF	Fly-By	228.7 / 230	5.1	- / +FL060	230	-

BUNED 6U STAR RWY 16

BUNE6U

Nav. Spec.	WPT Name	Latitude (N) / Longitude (W)	Path Term	Fly-By Fly-Over	True track / Mag track (°)	Distance (NM)	Upper limit / Lower limit (ft)	Speed limit (kts)	Remarks
RNAV 1	BUNED	523721.9 / 0063748.2	IF	-	-	-	-FL240 / -	-	-
RNAV 1	DIRUM	530009.7 / 0063940.0	TF	Fly-By	357.2 / 359	22.9	-	-	-
RNAV 1	KEPOR	531016.5 / 0062200.7	TF	Fly-By	046.3 / 048	14.7	-	-	Turn R
RNAV 1	OTNER	531715.0 / 0061827.0	TF	Fly-By	017.0 / 019	7.3	-	250	Turn L
RNAV 1	DW005	533736.3 / 0063717.1	TF	Fly-By	331.2 / 333	23.3	-	250	Turn L
RNAV 1	ULTAG	534201.0 / 0064417.2	TF	-	316.7 / 318	6.1	- / +FL060	220	Turn L

LIPGO 3U STAR RWY 16

LIPG3U

Nav. Spec.	WPT Name	Latitude (N) / Longitude (W)	Path Term	Fly-By Fly-Over	True track / Mag track (°)	Distance (NM)	Upper limit / Lower limit (ft)	Speed limit (kts)	Remarks
RNAV 1	LIPGO	530350.1 / 0053000.0	IF	-	-	-	-FL240 / -	-	-
RNAV 1	RUBAR	530808.9 / 0054805.4	TF	Fly-By	291.7 / 293	11.7	-	-	-
RNAV 1	OTNER	531715.0 / 0061827.0	TF	-	296.7 / 298	20.4	-	250	Turn R
RNAV 1	DW005	533736.3 / 0063717.1	TF	Fly-By	331.2 / 333	23.3	-	250	Turn R
RNAV 1	ULTAG	534201.0 / 0064417.2	TF	Fly-By	316.7 / 318	6.1	- / +FL060	220	Turn L

NIMAT 2K STAR RWY 16

NIMA2K

Nav. Spec.	WPT Name	Latitude (N) / Longitude (W)	Path Term	Fly-By Fly-Over	True track / Mag track (°)	Distance (NM)	Upper limit / Lower limit (ft)	Speed limit (kts)	Remarks
RNAV 1	NIMAT	535754.1 / 0054431.7	IF	-	-	-	-FL240 / -	-	-
RNAV 1	KERAV	533742.7 / 0054557.3	TF	Fly-By	182.4 / 184	20.2	- / +FL060	220	-

NIRIF 1U STAR RWY 16

NIRIU

Nav. Spec.	WPT Name	Latitude (N) / Longitude (W)	Path Term	Fly-By Fly-Over	True track / Mag track (°)	Distance (NM)	Upper limit / Lower limit (ft)	Speed limit (kts)	Remarks
RNAV 1	NIRIF	521755.9 / 0053404.3	IF	-	-	-	-FL240 / -	-	-
RNAV 1	DW100	524253.8 / 0053456.8	TF	Fly-By	358.8 / 000	25.0	-	-	-
RNAV 1	RUBAR	530808.9 / 0054805.4	TF	Fly-By	342.6 / 344	26.5	-	-	Turn L
RNAV 1	OTNER	531715.0 / 0061827.0	TF	Fly-By	296.7 / 298	20.4	-	250	Turn L
RNAV 1	DW005	533736.3 / 0063717.1	TF	Fly-By	331.2 / 333	23.3	-	250	Turn R
RNAV 1	ULTAG	534201.0 / 0064417.2	TF	Fly-By	316.7 / 318	6.1	- / +FL060	220	Turn L

OLAPO 5U STAR RWY 16

OLAPSU

Nav. Spec.	WPT Name	Latitude (N) / Longitude (W)	Path Term	Fly-By Fly-Over	True track / Mag track (°)	Distance (NM)	Upper limit / Lower limit (ft)	Speed limit (kts)	Remarks
RNAV 1	OLAPO	534649.0 / 0071740.6	IF	-	-	-	-FL170 / -	-	-
RNAV 1	ULTAG	534201.0 / 0064417.2	TF	Fly-By	103.4 / 105	20.4	- / +FL060	220	-

OSGAR 6U STAR RWY 16

OSGA6U

Nav. Spec.	WPT Name	Latitude (N) / Longitude (W)	Path Term	Fly-By Fly-Over	True track / Mag track (°)	Distance (NM)	Upper limit / Lower limit (ft)	Speed limit (kts)	Remarks
RNAV 1	OSGAR	530257.9 / 0071612.8	IF	-	-	-	-FL200 / -	-	-
RNAV 1	DIRUM	530009.7 / 0063940.0	TF	Fly-By	097.0 / 099	22.2	-	-	-
RNAV 1	KEPOR	531016.5 / 0062200.7	TF	Fly-By	046.3 / 048	14.7	-	-	Turn L
RNAV 1	OTNER	531715.0 / 0061827.0	TF	Fly-By	017.0 / 019	7.3	-	250	Turn L
RNAV 1	DW005	533736.3 / 0063717.1	TF	Fly-By	331.2 / 333	23.3	-	250	Turn L
RNAV 1	ULTAG	534201.0 / 0064417.2	TF	Fly-By	316.7 / 318	6.1	- / +FL060	220	Turn L

SUTEX 6U STAR RWY 16

SUTE6U

Nav. Spec.	WPT Name	Latitude (N) / Longitude (W)	Path Term	Fly-By Fly-Over	True track / Mag track (°)	Distance (NM)	Upper limit / Lower limit (ft)	Speed limit (kts)	Remarks
RNAV 1	SUTEX	524927.7 / 0065549.3	IF	-	-	-	-FL200 / -	-	-
RNAV 1	DIRUM	530009.7 / 0063940.0	TF	Fly-By	042.3 / 044	14.5	-	-	-
RNAV 1	KEPOR	531016.5 / 0062200.7	TF	Fly-By	046.3 / 048	14.7	-	-	Turn R
RNAV 1	OTNER	531715.0 / 0061827.0	TF	Fly-By	017.0 / 019	7.3	-	250	Turn L
RNAV 1	DW005	533736.3 / 0063717.1	TF	Fly-By	331.2 / 333	23.3	-	250	Turn L
RNAV 1	ULTAG	534201.0 / 0064417.2	TF	Fly-By	316.7 / 318	6.1	- / +FL060	220	Turn L

16 MAY 2024

VATRY 3U STAR RWY 16

VATR3U

Nav. Spec.	WPT Name	Latitude (N) / Longitude (W)	Path Term	Fly-By Fly-Over	True track / Mag track (°)	Distance (NM)	Upper limit / Lower limit (ft)	Speed limit (kts)	Remarks
RNAV 1	VATRY	523316.0 / 0053000.0	IF	-	-	-	-FL240 / -	-	-
RNAV 1	DW100	524253.8 / 0053456.8	TF	Fly-By	342.7 / 344	10.1	-	-	-
RNAV 1	RUBAR	530808.9 / 0054805.4	TF	Fly-By	342.6 / 344	26.5	-	-	-
RNAV 1	OTNER	531715.0 / 0061827.0	TF	Fly-By	296.7 / 298	20.4	-	250	Turn L
RNAV 1	DW005	533736.3 / 0063717.1	TF	Fly-By	331.2 / 333	23.3	-	250	Turn R
RNAV 1	ULTAG	534201.0 / 0064417.2	TF	Fly-By	316.7 / 318	6.1	- / +FL060	220	Turn L

Hold Identification – EIDW AD 2.24-24.1

Holding Fix	Latitude (N) / Longitude (W)	Inbound True Track (°)	Inbound Mag Track (°)	Maximum Indicated Airspeed (kts)	Minimum Holding Altitude (ft)	Maximum Holding Level (FL)	Outbound time (min)	Direction of Turn
KERAV	533742.7 / 0054557.3	205.6	207	230	+A5000	-FL140	1	R
ULTAG	534201.0 / 0064417.2	136.6	138	220	+A5000	-FL140	1	L